

# OBJECT INSIGHT

INSIGHT INTO VERY SPECIAL OBJECTS

INDUSTRY

AUTOMOTIVE, GARAGES, CAR PARKS AGRICULTURE FOODSTUFFS HEALTHCARE OFFICES, PUBLIC FACILITIES EXTERNAL SURFACES SPECIAL SOLUTIONS



*Showroom at company Multivac*

 KLB  
KÖTZTAL

# The Object

**Showroom at  
company Multivac**  
87787 Wolfertschwenden,  
GERMANY

**Category:** Showroom  
**Area size:** 950 m<sup>2</sup>  
**Completion:** Nov 2020

**Floor covering:**  
Robust and non-slip coating  
with improved resistance to  
chemicals

**Area type:**  
Sales and exhibition space  
for machines

**Requirements:**  
Safe footing as well as  
mechanical and chemical  
stability

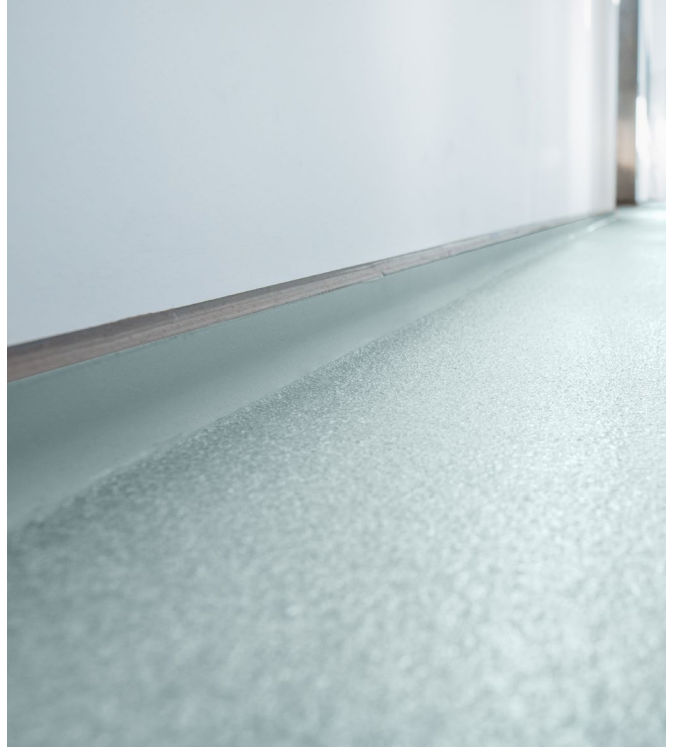


## *Insight: Slip-resistant and robust*

Reactive resin floor coverings are particularly suitable for exhibition spaces such as the showroom at company Multivac. They can be used as walkways due to their non-slip surface and also as usable space thanks to their high load-bearing capacity.



Slip-resistance achieved by scattering with quartz sand.



Jointless connections to the walls ensure ease of cleaning.

# *Sales and exhibition space for machines*

## *INDUSTRY / MANUFACTURING AND PRODUCTION*

For the showroom of packaging machinery specialist Multivac, the applied coating can be described as viscoplastic with good flexibility: the risk of cracking is significantly reduced.

For use in exhibition areas, the floor must be able to withstand a reasonable load: once fully cured, it is resistant to light or medium mechanical stress, such as constant foot traffic. After applying the **KLB-SYSTEM EPOXID EP 50** primer, the substrate can be sealed with an additional tested waterproofing layer of **KLB-SYSTEM POLYURETHAN PU 426**. The finished flooring is therefore resistant to liquids such as water or oils that may penetrate from the machines.

The full scattering of **KLB-SYSTEM POLYURETHAN PU 421** with **KLB coloured quartz sand** in different colour combinations results in slip-resistance classes from R10 to R12. Thanks to these anti-slip properties, the floor acts as a guarantor of safety, protecting against slipping and creating a pleasant, safe walking environment.

**KLB-SYSTEM EPOXID EP 172** is a low-emission, transparent, glossy top sealer that can be installed indoors without compromising health or ambient air quality. With a low yellowing tendency, it protects the inherent colour of the coating for longer when exposed to sunlight and offers very good resistance to liquids or aggressive cleaning agents, thus ensuring a long-lasting, attractive appearance.

### *Attention: differing system build-up!*



The object shown has a special build-up. The installation technique and product composition for this flooring was developed and implemented by our customer. The tested and proven KLB systems provide a reliable basis for many such out-of-the-ordinary applications. For special circumstances or if you have individual design requirements, you can also optionally supplement or adapt our systems with other products from our high-quality portfolio. KLB consultants will be happy to answer any technical questions you may have. You can find KLB systems recommended by us on our website at:



[www.klb-koetzal.de/en/systemfinder](http://www.klb-koetzal.de/en/systemfinder)



Scan the QR code on your smart phone or open the following link to get to the digital version:  
[www.klb-koetzal.de/en/references/industry/floor-covering-showroom-multivac/](http://www.klb-koetzal.de/en/references/industry/floor-covering-showroom-multivac/)

# The systematic approach to great flooring.

You can find more systems and references on our website:

[www.klb-koetzal.de/en/systemfinder](http://www.klb-koetzal.de/en/systemfinder)

[www.klb-koetzal.de/en/klb-references](http://www.klb-koetzal.de/en/klb-references)

Please note: This Object Insight brochure shows exemplary build-ups for a specific area of application. It does not replace qualified, object-specific advice from KLB for your project. All stated information is based on our experience and technical preparation. We guarantee the correct and proper quality of our products. We do not assume responsibility for the work not carried out by us, since we have no influence on the processing or processing conditions on site. We recommend on-site trials to be conducted in individual cases. In addition, our "General Terms and Conditions" apply.



KLB KÖTZTAL Lacke + Beschichtungen GmbH  
Günztalstraße 25  
89335 Ichenhausen, GERMANY  
info@klb-koetzal.com  
Phone +49 8223 9692-0  
Fax +49 8223 9692-100



Certified according to ISO 9001.



Visit us online.

Facebook Instagram LinkedIn YouTube @klbkoetzal